



valid from June 2018

This document is provided for information purposes only and Gravelli s.r.o. reserves the right to modify its content.

Gravelli / Washbasins Mounting Instructions



Gravelli® concrete washbasins are one of the company's iconic products. They are made of the highest quality concrete under the name FixCrete® and they are treated with several layers of high quality sealer, which makes the concrete surface resistant to liquid soaking.

For more information on the use and maintenance, see „Gravelli Surface Maintenance Manual FixCrete“.

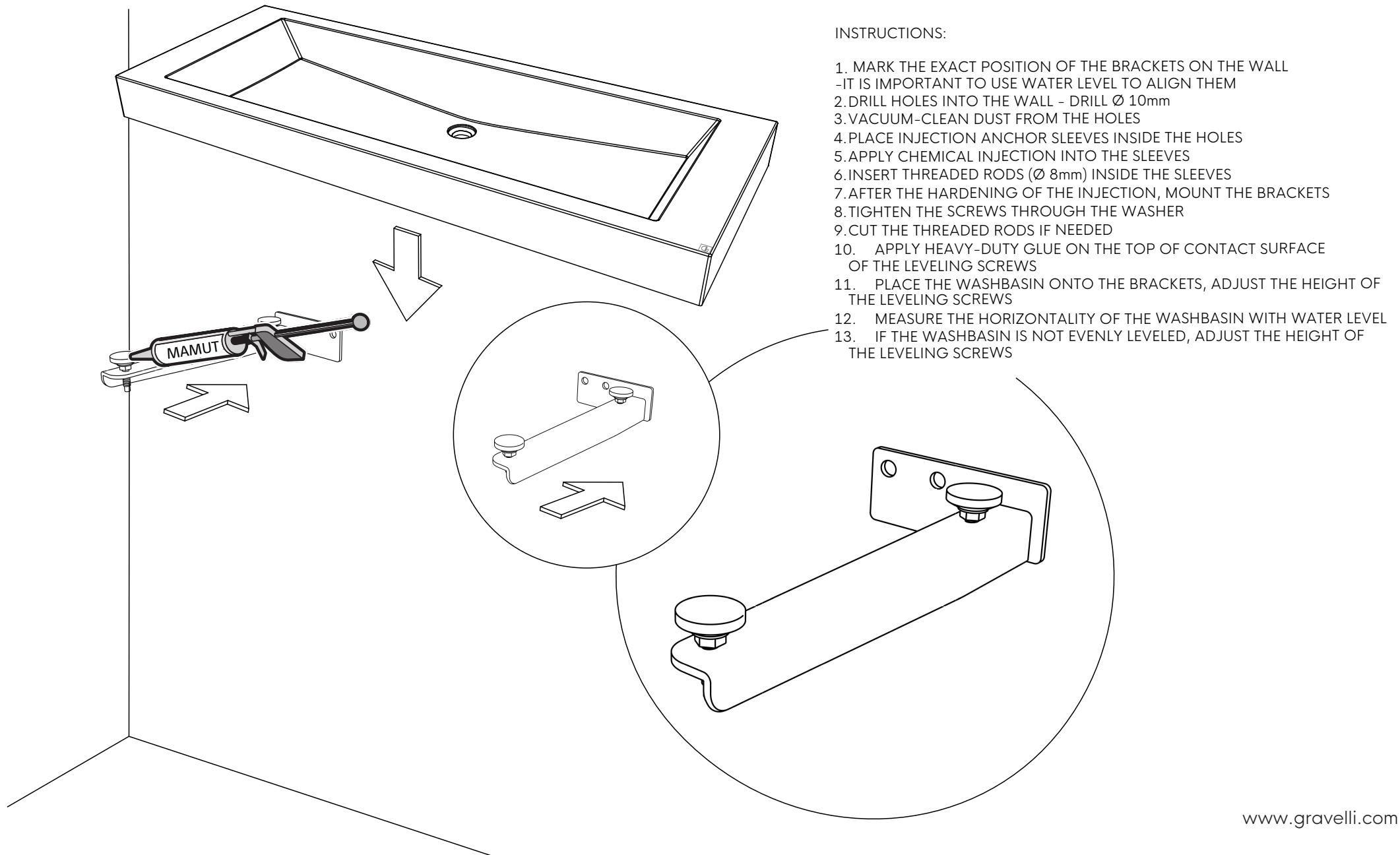
FixCrete® parameters:

- compressive strength: 140MPa
- tensile strength: 24MPa
- volume density: 2300kg/m³

Washbasin parameters:

- wall thickness: 20mm
- standard washbasin dimensions can be customized according to the technical drawing (each type of washbasin has its own technical drawing)
- each washbasin has a standard drain hole or has an integrated washbasin drain
- washbasins in their standard form do not have a faucet hole, but it can be added upon request (see „Technical drawing“)
- each wall-mounted washbasin comes with wall-mounting brackets included
- colours: grey, anthracite, sand
- mounting standard washbasins:
 - on wall-mounting brackets
 - in supporting wall – see Picture 1
 - in drywall – see Picture 2
 - on bathroom furniture – see Picture 3
 - on a frame – see Picture 4
- mounting countertop washbasins – see Picture 5

Picture 1 - Mounting washbasin on brackets in supporting wall



Picture 2 - Mounting washbasin on brackets in drywall

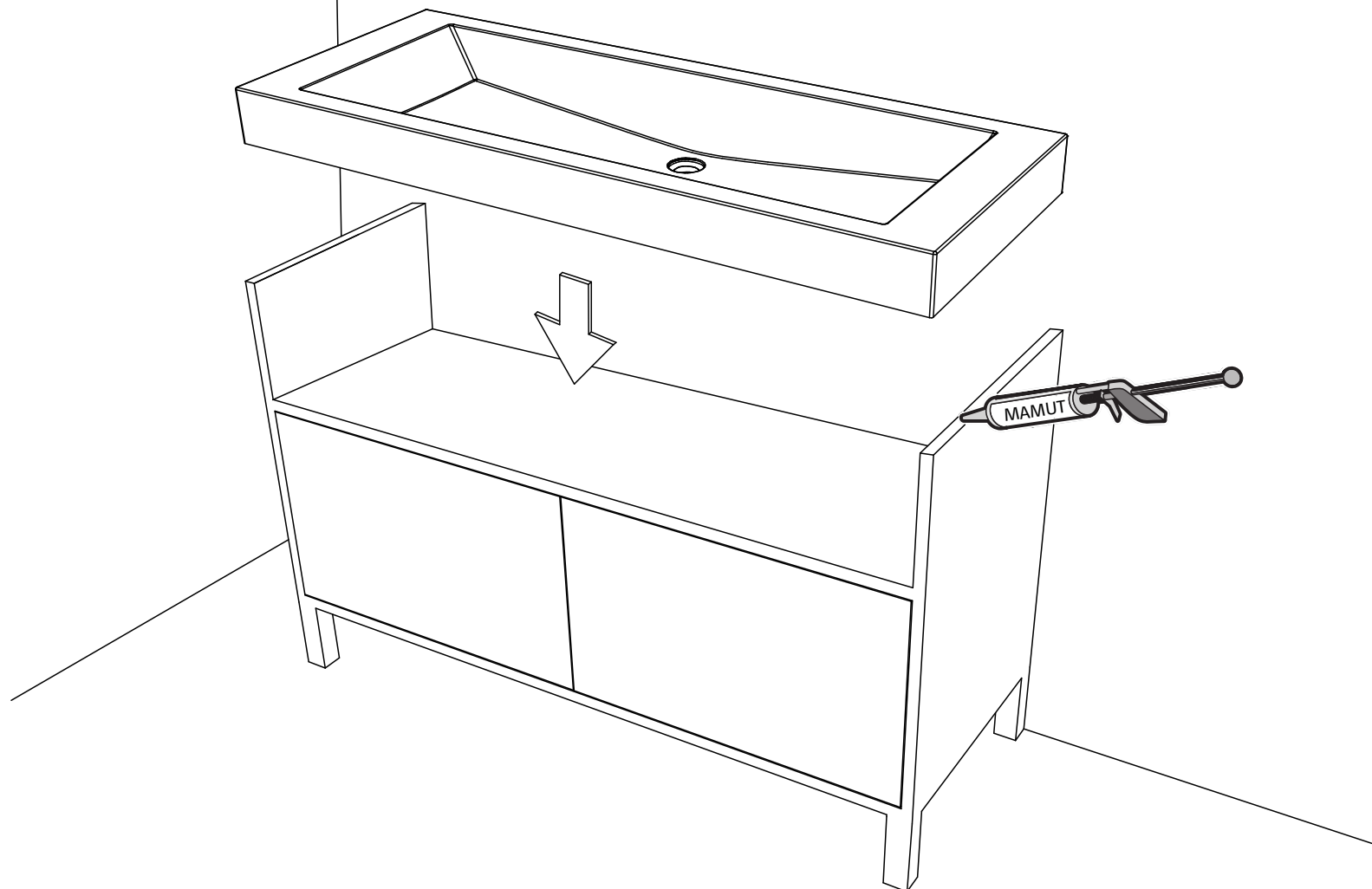
INSTRUCTIONS :

1. MARK THE EXACT POSITION OF THE BRACKETS ON THE FLOOR
2. ANCHOR A STEEL POLE (EX. 70X70X4mm) WITH WELDED NIB IN THE MARKED SPOT BETWEEN THE FLOOR AND THE CEILING
 - USE TWO WATER LEVELS TO ACHIEVE PERFECTLY VERTICAL POSITION
 - MARK THE LOCATION OF THE NIB HOLES
 - DRILL HOLES INTO THE WALL AND CEILING
 - VACUUM-CLEAN DUST FROM THE HOLES
 - PLACE INJECTION ANCHOR SLEEVES INSIDE THE HOLES
 - PLACE THE HOLES OF THE WELDED NIB PRECISELY ABOVE THE DRILLED HOLES IN THE FLOOR AND USE TWO WATER LEVELS TO PLACE THE STEEL POLES IN A PERFECTLY VERTICAL POSITION
 - APPLY CHEMICAL INJECTION INTO THE SLEEVES
 - INSERT THREADED RODS (Ø 8mm) INSIDE THE SLEEVES
 - AFTER THE HARDENING OF THE INJECTION, TIGHTEN THE SCREWS THROUGH THE WASHER
 - CUT THE THREADED RODS IF NEEDED
3. MARK THE EXACT POSITION OF THE BRACKETS ON THE ANCHORED POLES
 - IT IS IMPORTANT TO USE WATER LEVEL TO ALIGN THEM
4. DRILL HOLES INTO THE STEEL POLE AND MOUNT THE BRACKETS WITH SCREWS OR THREADED RODS, WASHERS AND NUTS
5. APPLY HEAVY-DUTY GLUE ON THE TOP OF CONTACT SURFACE OF THE LEVELING SCREWS
6. PLACE THE WASHBASIN ONTO THE BRACKETS, ADJUST THE HEIGHT OF THE LEVELING SCREWS
7. MEASURE THE HORIZONTALITY OF THE WASHBASIN WITH WATER LEVEL
8. IF THE WASHBASIN IS NOT EVENLY LEVELED, ADJUST THE HEIGHT OF THE LEVELING SCREWS OR PLACE WASHERS

Picture 3 – Mounting of washbasins on a furniture

INSTRUCTIONS:

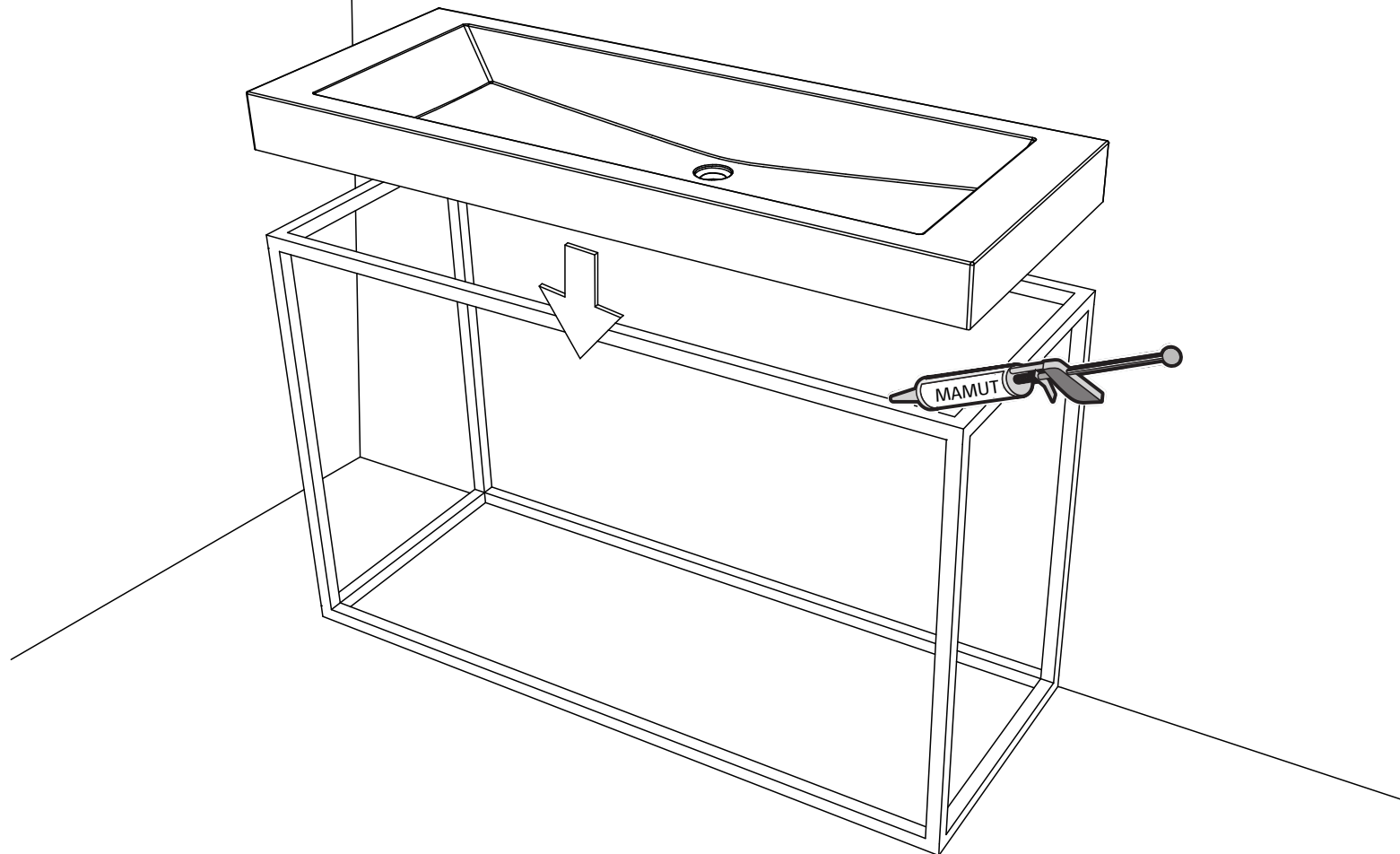
1. ANCHOR THE FURNITURE IN DESIRED POSITION INTO THE WALL OR THE FLOOR
2. APPLY HEAVY-DUTY GLUE ON THE STEEL FRAME
3. PLACE THE WASHBASIN ON THE STEEL FRAME
4. REMOVE ANY EXCESS SILICONE WITH A PLASTIC PUTTY KNIFE AND CLOTH



Picture 4 – Mounting of washbasins on a frame

INSTRUCTIONS:

1. ANCHOR THE FRAME IN DESIRED POSITION, INTO THE WALL OR THE FLOOR
2. APPLY HEAVY-DUTY GLUE ON THE STEEL FRAME
3. PLACE THE WASHBASIN ON THE STEEL FRAME
4. REMOVE ANY EXCESS SILICONE WITH A PLASTIC PUTTY KNIFE AND CLOTH



Picture 5 – Mounting of countertop washbasins

INSTRUCTIONS:

1. MARK THE DESIRED WASHBASIN POSITION ON THE COUNTER TOP
2. DRILL A HOLE IN THE COUNTER TOP FOR THE DRAIN
3. APPLY SANITARY SILICONE TO THE UNDERSIDE OF THE WASHBASIN STAYING APPROX. 10mm FROM THE OUTSIDE EDGE
4. PLACE THE WASHBASIN ON THE COUNTER TOP
5. REMOVE ANY EXCESS SILICONE WITH A PLASTIC PUTTY KNIFE AND CLOTH

